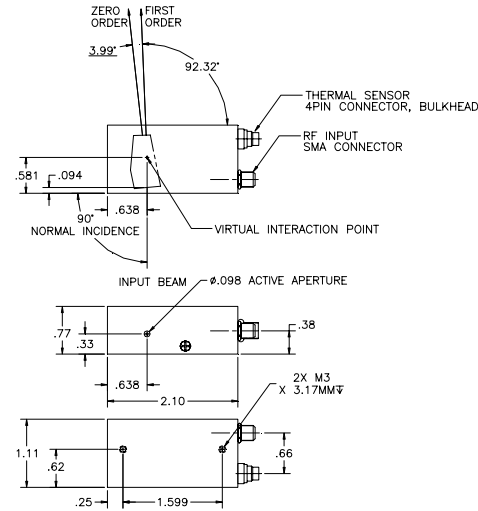


SPECIFICATIONS

AO Medium	TeO2
Acoustic Velocity	.68 mm/μs
Active Aperture*	2.5 mm Dia
RF Frequency Range	92-132 MHz
RF Bandpass (FWHM)	560 KHz @ 390 nm
Wavelength Range	351-430 nm
VSWR	2.4 :1 Max
Input Impedance	50 Ohms Nominal
Insertion Loss	10 % Max
Temperature Sensitivity	0.05 nm/C
Diffacted Beam Collinearity, min deviation	0.01 degrees
Input Optical Polarization	Vertical
Output Optical Polarization	Horizontal
Max RF Power	1 watt

Outline Drawing:

Package 97-02837-31-15r1



Document

05/07/09

Control

Notes:
 Simultaneous Diffraction, any 8 wavelengths
 Random Wavelength Access Time: < 1.5 usec (1 mm Beam Diameter)
 Max RF Power with 8 Simultaneous Frequencies = 1W

Special Testing

Diffraction Efficiency
 (per wavelength input divergence < 2 mrad)

Min	Units	Max
90	%	

THIS DOCUMENT IS THE PROPERTY OF CRYSTAL TECHNOLOGY, INC. IT IS NOT TO BE REPRODUCED OR DISCLOSED IN WHOLE OR IN PART OTHER THAN BY EMPLOYEES CRYSTAL TECHNOLOGY AND ITS CONTRACTED REPRESENTATIVES AND DISTRIBUTERS. ANY EXCEPTION REQUIRES THE WRITTEN CONSENT OF AN AUTHORIZED REPRESENTATIVE OF CRYSTAL TECHNOLOGY.

TOLERANCES: .XX ± .01 .XXX ± .005	DR	G. Scholz 4/30/2009	Crystal Technology, Inc. DESCRIPTION: AOTF PCAOM UV 351-430, 2X
MATERIAL:	CHK		
FINISH:	APP		
	APP		PART NUMBER: 97-02837-31
			REV: C
			SHEET 1 OF 1

*Active Aperture: Aperture over which performance specifications apply.